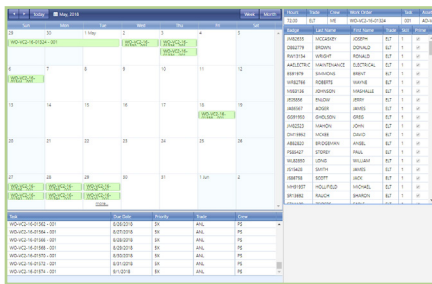




SCHEDULING

CHAMPS Scheduling Module has been specifically designed to provide a drag and drop method for loading tasks from the backlog and assigning them to crews or individuals that are available to work the task. The module includes a work assignment for Badge window which permits individuals to review their work assignments for the current and following weeks. A Crew Availability window permits the definition of Crew scheduling Start Day, Start Time, Interrupt Interval and Labor Resources. The Backlog Work for Crew window displays all tasks eligible to be scheduled, based on the Work Order Type workflow, and sorted by WO Priority Value, Required Date, Create Date and WO Id. This sort order makes the most important work appear first.



The Scheduled Work for the Week window is loaded with a row reflecting each day of the week, beginning with the Crew's scheduling Start Day of the week. The Scheduled Work for the Week data window title will reflect the Start and End dates of the schedule week. The module provides the ability for an organization to develop schedules up to 6 weeks in advance with the ability to refine. A schedule is always considered to be 7 days in length per week.

The CHAMPS Scheduling Module is integrated with other core modules, which together make up the CHAMPS EAM system.

FEATURES & FUNCTIONS:

- Permits a Work Order Task to be scheduled on multiple dates.
- Schedule creation for up to six weeks in the future.
- Allows defining of Crew/Trade scheduling availability.
- Work Order Tasks may be dragged from a backlog list into a schedule week / date.
- Badges related to the Scheduled Crew/Trade may be related to a scheduled Work Order Task.
- Work Order Tasks and Badges may be added to the schedule using barcode input.
- Scheduled Trade hours are displayed in relation to available and remaining hours.
- Scheduled work may be indicated as 'Interrupt' or 'Break-in' if it is added after the defined cutoff day / time.
- Assigned work may be displayed by Badge for up to six weeks in the future.
- Schedule data may be purged from the database for prior weeks

DEPLOYMENT

- Cloud hosting
- On Premise