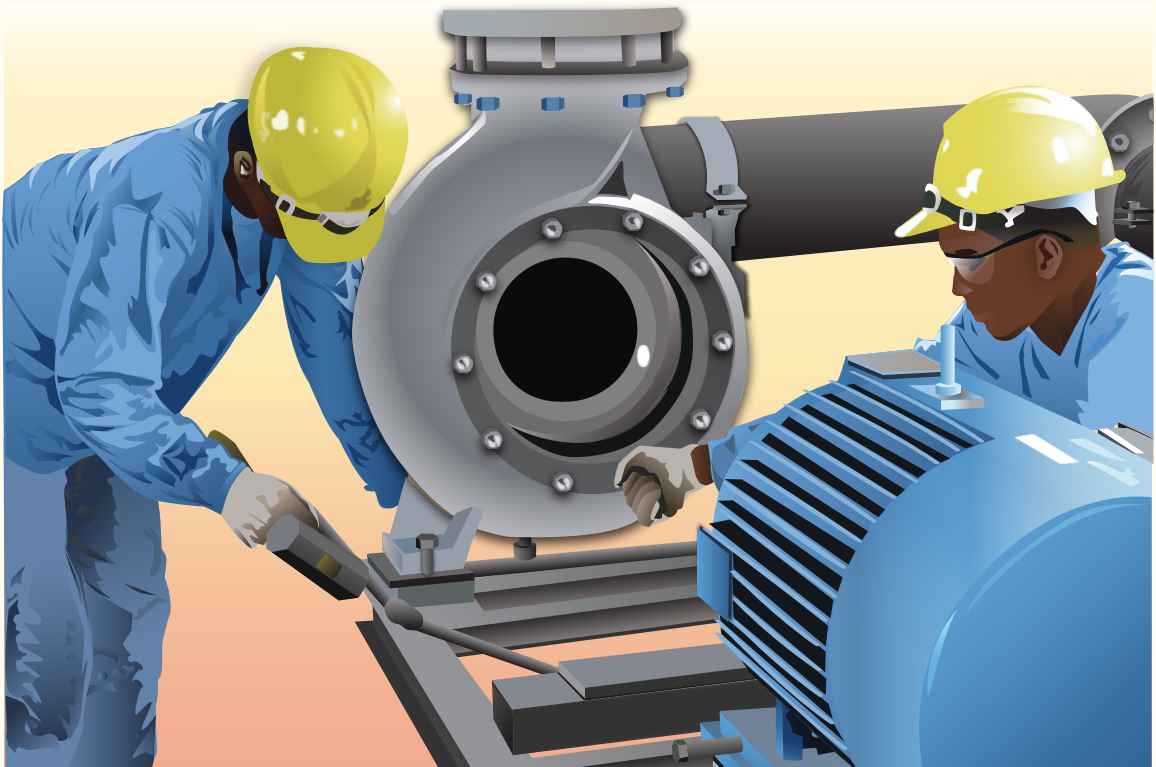


CHAMPS Computerized Maintenance Management System Powering Asset Reliability and Performance



Integrated solutions for work force management,
equipment optimization and maintenance excellence.

Contents

Return on Assets

The CHAMPS Difference

CHAMPS CMMS Functionality

- Asset management
- Workforce Management
- Work Order
- Preventive Maintenance
- Bill of Material
- Inventory
- Purchasing/Accounts Payable

Safety

- Lockout/Tagout
- Permits
- MSDS

Additional CMMS Components

- Calibration
- Project tracking
- Condition Reports
- Equipment Tree
- Multi-day Scheduling
- Business Intelligence

CHAMPS Services

- Product Evaluation
- Implementation Planning
- Application Overview
- Application Modification & Integration
- Data Conversion
- Training
- Application Validation Testing
- Acceptance and Go Live Support
- Ongoing Maintenance and Support
- Consulting

The Bottom Line

Return On Assets

In any organization, the optimization of human and equipment assets is essential for increasing productivity and profits. To achieve this, many organizations are turning to various optimization strategies to improve their operational processes. Since maintenance can account for 40% of operating costs, there should be no argument that increased workforce productivity and equipment uptime contribute directly to the bottom line profits of any organization. CHAMPS Computerized Maintenance Management System (CMMS) is designed to reduce maintenance cost and deliver increased return on your assets. We can show you how CHAMPS CMMS will transform your asset management processes. Better still; just listen to what some of our customers have to say...

The CHAMPS Difference

Customer Loyalty

CHAMPS does not just sell products, we sell solutions. This requires getting “up-close and personal” with our customers, maintaining constant communication and personalized support throughout the solution’s lifecycle. Our customers’ entire experience from product selection to implementation, deployment, and ongoing support is what leads them to form a strong and lasting partnership with us. The way we work with our customers is what truly differentiates us from other CMMS companies. That also explains why companies have remained loyal to our CMMS solutions for over 25 years.

“I have been with Schering-Plough for 25 years and when we talk about customer support, no application system that we employ provides us with better technical support, period.”

Billy G. Bailey
Coordinator of Site Support,
Schering-Plough

Enhancing your business processes

CHAMPS CMMS is developed and implemented with the unique needs of the customers in mind. CHAMPS’ application is totally flexible. The users are able to configure the solution exactly as desired. Our Workflow engine enables customers to set up the application to match their work processes as well as incorporate industry best practices.

Experience and Expertise

With extensive experience in implementing CMMS solutions, CHAMPS has gained unparalleled industry insight and understanding of customers needs. When selecting and implementing CHAMPS CMMS, you can be confident that our experienced professionals will help you get it right the first time. We always team with your staff to transfer knowledge and establish enduring partnerships.

“Meeting with CHAMPS Management staff gave us insight into how they operate. Some of the intangibles that we felt from that meeting gave us confidence in CHAMPS capacity to satisfy our needs.”

Dennis Pearson
Maintenance Engineer
HERSHEYPARK



Superior Functionality

From maintenance work management to inventory control, CHAMPS gives you the ability to make informed decisions. With feedback from users and prospects, CHAMPS CMMS has attained the prominent position as the solution with the most innovative and comprehensive functionality. Meeting the ever changing needs of our customers has helped CHAMPS CMMS become the 'best practice' 'benchmark' solution that it is today.

“The system is extremely integrated, so you can track your entire maintenance process from inventory, to purchasing, to planning/scheduling, to capital project tracking/reporting.”

Judy Mittan
Facilities Maintenance
Planner,
Quaker Oats Company

Total Cost of Ownership

CHAMPS provides the lowest Total Cost of Ownership (TCO) in the industry, resulting in a significant Return On Investment (ROI). This advantage is attained by delivering functionally comprehensive and integrated solutions, requiring little or no customization. Our experience and expertise assure project completion on schedule and within budgets, without the need for an army of consultants as required by other solution providers.

“We especially like having an integrated system that encompasses all of the processes required for inventory control, procurement, maintenance and work management. Integration minimizes the need to write and maintain complicated interfaces.”

David Lavigne
GM of Organizational
Effectiveness,
VC Summer Nuclear Station
SCE&G, A SCANA Company

Designed for ease of use and easy learning

CHAMPS CMMS is designed to ensure that the application is easy to use and incorporates the following ideas and technologies:

Intuitive

From constant communication with our customers, CHAMPS understands how our application is utilized. We incorporate this understanding into our design to anticipate the information, task flows, and features that are required at key points within the user experience, making the application extremely intuitive.

Consistency

Consistency makes software easier to use. Things that look the same should behave in a consistent fashion, and an action should always produce the same result. In CHAMPS CMMS, all windows look and work the same way. We strive for the highest level of consistency across all parts of the application to quickly move from function to function, without confusion and wasted effort.

Flexibility

Recognizing that every customer and every user is different, CHAMPS CMMS is designed to be highly flexible. Organizations using CHAMPS CMMS do not have to change their processes or terminology. Users can customize the application to meet their unique needs. The application provides easy access to the features that most users will need frequently; while features used less often or by only a subset of users can be placed less prominently.



Timely Feedback

The application keeps the users informed by providing timely feedback on task performance. For example, progress indicators let users know that the system is carrying out their request. The users are also alerted to, and sometimes prevented from, taking actions that could result in the loss of data integrity.

Workflow

To accommodate your business processes CHAMPS CMMS provides a robust workflow engine, giving you the ability to take a fresh look at the way you work and help you optimize your work processes by incorporating best practices. CHAMPS CMMS Workflow is a rules-based methodology used to automate work processes by modeling what needs to be accomplished, by whom, when and with what dependencies. Factors such as document types, spending limits, route groups, document initiators, supervisor's signatures, approval requirements and the like are the criteria on which documents may be routed to different users as they pass through various levels of the approval process.

Security

CHAMPS CMMS employs a comprehensive security component and data locking utility that permits the implementation of object level, window based security for CHAMPS components. With CHAMPS Security you can identify objects or collections of objects to be secured, and define access privileges for a particular user or group of users (i.e. no restrictions, disabled/read only, invisible.)

Alerts

Alerts are user definable and are utilized to generate queries on a repeating cycle that can run in the background and provide feedback to users about specific circumstances. This process allows the setup of the alerts, the messages to be conveyed, to whom the alerts should be directed to and the method of delivery (i.e. e-mail, popup, write to file etc). Notification can be achieved even if the user is not logged on to the application. Alerts may be performed on-demand or on scheduled intervals.

Report Scheduler

The CHAMPS Report Scheduler is a tool that provides the ability to control the scheduled printing, e-mailing, and archiving of Reports and Documents in CHAMPS. The scheduler can be used to determine run by date and time intervals, specify output of Reports via e-mail, print or file and finally determine report process completion notification options.

Password Control

CHAMPS has application password functionality which controls login security for our solution. The password feature includes navigation control which puts a user in their appropriate default location and data set. The system password functions include password encryption, which limit the number of failed logon attempts.

Attachments

Where appropriate, CHAMPS components permit objects external to CHAMPS, such as documents, spreadsheets, images, etc., to be attached to CHAMPS records. Attachments may be linked to the original file or embedded within CHAMPS.

Field Audit

The CHAMPS Field Audit capability is a feature that allows an organization to determine which fields in the application need to be monitored for changes. Once the fields are identified, then CHAMPS will track changes to those fields, by whom, why, and when done.

CHAMPS CMMS Functionality

Asset Management:

CHAMPS Equipment module is a comprehensive, user friendly system that defines and tracks equipment records against which maintenance activities, costs, and history may be documented. The Equipment component includes functions that enable an organization to evaluate the success of its plant maintenance efforts, providing a core around which indicators and measurements can be gathered to assess maintenance performance.

This module incorporates cradle to grave tracking and analysis of asset information including:

- Boilerplate and specification data
- Asset location history
- Complete asset maintenance history
- Downtime and equipment failure statistics and analysis
- Manufacturer warranties notification
- Maintenance service agreements
- Asset performance analysis

Workforce Management:

CHAMPS Work Force management system is a flexible and fully integrated solution for work planning and time reporting. This module is specifically designed to maintain and track all employment-related information for company personnel and contractors. CHAMPS Work Force functions are used to accurately document how time is being expended in order to analyze the efficiency with which your organization is functioning. Important information contained within this component includes:

- All vital personal information
- Past and present personnel availability
- Training and certification data
- Detailed accident information
- Time and attendance information
- Multi-trade / skill / qualifications definition
- A callout overtime list to level overtime offered to employees

Work Order:

CHAMPS CMMS Work Order application component is one of the most comprehensive and integrated components of the CMMS system. A powerful feature of CHAMPS Work Order is the Workflow which enables you to plan and manage your work. The Work Order component provides the ability to identify, describe, and classify problems while initiating work requests. Work requests may be generated for any type of work required including service, emergency repairs, quick work, projects, standing work, dispatch work, and the like.

The Work Order component provides:

- Duplicate work request detection
- Planned work review
- Engineering change notice control
- Departmental approval routing
- Review of estimated costs
- Work order scheduling
- Comparison of estimated and actual costs
- Identify and analyze repair information
- Post all labor and material information
- Archive historical equipment repair information
- Setup a library of job plans defining standard maintenance jobs within the plant
- Daily and weekly scheduling based on available resources and work priority
- Automatic status update of work orders and individual steps
- Work Orders can be written against a Location Master record



Preventive Maintenance:

The CHAMPS Preventive Maintenance application stores and controls a library of tasks used to maintain assets. Preventive maintenance tasks (PMs) are comprised of planned task steps and associated procedure and safety instructions, labor and material requirements, etc., that are to be performed or consumed on demand or on a specified frequency. Once established, a PM is capable of generating corresponding work orders that will be used to execute the steps, procedures, use of labor and materials, etc. that are specified in the PM task. CHAMPS Preventive Maintenance component helps you to:

- Develop work packages
- Establish approval routing for work planners
- Create a list of equipment to be worked on or inspected
- Establish pm performance criteria
- Forecast information, including dates needed, labor requirements, material, tools
- Identify tasks that are overdue
- Transform a task due calendar and duty cycle tasks into work orders
- Perform material and labor requirements forecasting
- Define multiple meters/triggers/frequencies for a particular PM task
- Access Equipment Calibration data



Bill of Material:

The CHAMPS CMMS Bill of Material application component permits definition of itemized lists of parts used in support of maintenance activities. Bills of Material may define lists of parts associated to specific equipment Id's, maintenance tasks, or a specific make/model of a product. The Bill of Material system may be used to assist in material requirement planning of preventive maintenance tasks and work orders and to help determine inventory requirements. CHAMPS Bill of Material component includes:

- Bills of Material associated to a specific asset or shared by many
- Assets identified by specific make/model may be associated to a specific make/model Bill of Material
- Inventory pick lists may be generated directly from the Bill of Material
- The ability to relate a Bill of Material to asset PMs, that can then automatically generate a Pick List for parts required on a PM
- For service related work not associated to any particular asset, a Job Part Kit may be created
- Ability to model existing Bills of Material
- Ability to attach documents and drawings to any Bill of Material

INVENTORY

Inventory Control is fully integrated with Purchase Orders and Accounts Payable. The system provides control over purchasing, with access to up-to-date inventory balances and comprehensive valuation statistics. Inventory Control provides an on-line, real-time picture of inventory quantities at various stages in the inventory cycle. CHAMPS Inventory is a fully functional Inventory control solution and an integrated part of CHAMPS CMMS. CHAMPS Inventory encompasses the following components:

Part Catalog

- Stock, Non-Stock and miscellaneous Parts Tracking
- Serialized & Lot Traceable Inventory Tracking
- User Definable ABC Inventory Classification
- Purchasing & Receiving Controls
- Default GL Accounts
- LIFO, FIFO & Weighted Average Inventory Valuation Methods

Warehouse/Bin

- Company/Sites
- Warehouse Locations
- Bin Addresses for Inventoried Parts

Tracking

- Serialized & Lot Traceable Part Tracking
- System Required Serial and/or Lot Number Entry Upon Material Receipt , Issue & Return

Issues>Returns/Transfers

- Material Issue/Return, Warehouse Transfer, Cost & Unit Adjustment from a Single Window
- Perform Adjustment Against an Account, Project and/or Work Order Step

Receiving & Bar Code Support

- Automatic PO Closing Upon Material Receipt
- User Defined Material Receipt Tolerances
- Bar Code Support for All Inventory Functions



Physical Inventory

- User Defined Inventory Freeze Parameters
- Perform Purchasing & Inventory Functions

Material Request

CHAMPS Material Request component provides the ability to reserve, stage, issue and return inventory storeroom parts for upcoming projects or scheduled jobs. Material requests may be created during the work order planning process or automatically generated when preventive maintenance procedures are triggered. Features of the CHAMPS Material Request are:

- Manual or automatic creation of material request documents
- Hard and soft part reservation functionality
- Part issue and return en masse
- Dynamic part information update from inventory, purchasing and work document processing

Purchasing

The CHAMPS Purchasing component provides flexible full-function enterprise capabilities assisted by user defined work flow routing to help speed decisions throughout the organization. CHAMPS Purchasing allows three-way matching of the purchase order, parts received, and the vendor's invoice. The system also provides for discrepancy tracking and variance approval. Complete vendor information is defined within the system along with 1099 tracking, vendor to part price cross-reference, direct payment to vendor, vendor quotation, and performance. CHAMPS Purchasing Component Key Features:

- On-line requisitioning
- Requisition to purchase order transfers
- Standard and blanket purchase orders
- Purchase order distribution
- Change orders
- Request for quotations and vendor quotation analysis
- Automatic RFQ to PO Transfer
- Purchase order receiving
- Purchase order variance analysis
- Vendor Information for Purchasing and Accounts Payable Functions
- Vendor hold processing
- User defined purchase request approval routing
- Intelligent e-mail functionality
- Unit of measure conversions



Accounts Payable

CHAMPS Accounts Payable (AP) provides comprehensive information for effective cash management. The system provides flexible payment processing and disbursement details allowing the organization to effectively control vendor relationships, while managing cash flow and controlling expenses. The CHAMPS Accounts Payable component supports complete vendor payment history and invoice analysis with user defined aging ranges. The system also supports on-line approval of vendors and invoices and multiple payment options including checks, wire transfers and electronic fund transfer. Important features of the CHAMPS Accounts Payable component include:

- Unlimited vendor addresses
- Vendor default account numbers
- 1099 and backup withholding
- Full multi-currency support
- Pre-defined vendor invoicing information
- Recurring invoices, weekly, bi-monthly, quarterly
- Unlimited bank account creation
- Vendor and invoice hold processing
- On-line drill down analysis
- Sales and use tax calculations
- Automatic creation of distributions
- Bank reconciliation
- Automatic duplicate invoice checking
- Standard procurement reports
- Document attachment capability
- Vendor Performance analysis

SAFETY

Lockout/Tagout (LOTO)

CHAMPS LOTO is designed and developed with industry best practices in mind. This innovative solution meets or exceeds Occupational Safety and Health Administration (OSHA) requirements, adheres to LOTO guidelines suggested by the Electric Power Research Institute (EPRI) and addresses all process options for the Department of Energy (DOE) LOTO requirements.

The screenshot shows the 'Tagout - Edit Mode' window. It features a tabbed interface with 'Tagout' selected. The form contains the following fields and data:

- Tagout Id: 09-0002
- Name: (EC-2) Outage Work to Remove Cooling Ductwork
- Current State: Prepared
- Next State: (dropdown menu)
- System: AC
- Train: N/A
- Purpose: Outage Work to Remove Cooling Ductwork. Work includes all Air Handling portions of the system.
- Description: Ensure ARS has been cooled down to 120-140 degrees. Shutdown Cooling per SOP-116. Drawing: 989-865
- Created By/Dt: TR74210 / 2/16/2009 10:32:33
- Prepare By/Dt: IT789321 / 3/23/2009 06:30:50

At the bottom, there are buttons for 'Enclosure', 'WO Step', 'Authorize', 'Verify', 'Boundary Mgr', and 'Signatures'. A 'No Route' icon is also visible in the top right corner of the form area.

CHAMPS LOTO:

- Offers a completely integrated solution that protects workers and equipment
- Establishes clear roles and responsibilities of plant personnel, thereby creating consistent work practices
- Documents tagging and clearance policies to demonstrate compliance with regulatory agencies
- Improves outage schedules, bringing plants back on-line quicker thereby increasing revenues
- Shares Tags reducing the time to hang and clear tagouts

Some additional features include:

- Electronic badge sign-on and off
- Auto tagout generation with attachments
- Automated conflict checks and resolutions
- Tag Holders Summary displays all supervisors and workers currently signed on to work orders

Permits

The CHAMPS Permits Module creates a document that describes the permit details, steps and procedures. This form Template can be used when establishing various Permit Templates. After the desired permit type has been selected, one can specify the various criteria (i.e., Maintenance Location, Physical area or a Contained area, etc.), define special instructions, specific descriptions or monitoring status. Permit Templates may be associated with Equipment records. The Permit Module includes the following features:

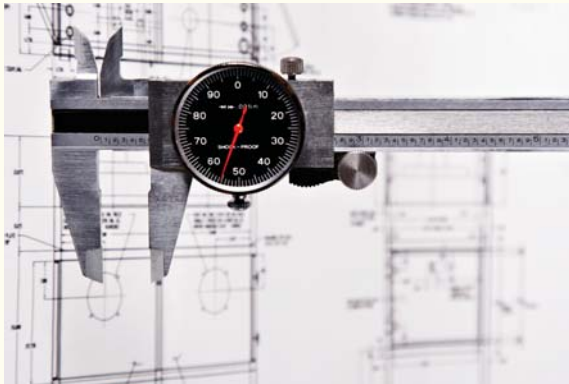
- Multiple Permit templates may be created from the same 'Permit Type' code
- The Permit Auto Comments can automatically populate the fields, saving valuable time in creating new Permits
- Permits provide the ability for route slip creation and approval
- Permits have a user-defined workflow for each 'Permit Type'
- Permits may be associated with PM Tasks and to Work Order Steps
- A Permit may be shared by multiple Work Orders
- Permit templates provide the ability for route slip creation and approval

CHAMPS MSDS

CHAMPS MSDS permits retrieval, viewing and printing of Material Safety Data Sheets (MSDS). MSDS information is stored in a database with relevant data such as material ingredients, synonyms, safety information (including special instructions for handling, storage, disposal etc.) and label information. MSDS information may be retrieved based on criteria such as MSDS number, chemical name, synonym or ingredient. The application also allows creation of MSDS library of specific chemicals and historical archive of OSHA required data.



ADDITIONAL CMMS COMPONENTS



Calibration

The CHAMPS Calibration Module provides the ability to track calibrated instruments, tools and measurement standards. The application allows users to forecast and perform calendar-driven or on demand calibration tasks using qualified technicians. The solution also tracks the usage of calibrated instruments and tools via Work Order Steps. The Work Order Step's Retest Tab tracks Test Instruments used to accomplish the work and reference Instrument Ids and procedures with specific Work Order Steps. Calibration Tasks are performed on a calendar-based trigger such as Month, 30 Days, 4 Weeks, Annual, etc. The Calibration Module provides the following features:

- Provide where-used reverse traceability reports identifying Standard to Instrument/Tool usage, Technician to Calibration task performance, and Instrument/Tool to Equipment usage
- The ability to track calibrated instruments, tools and measurement standards
- Forecast and perform calendar-driven or on demand calibration tasks using qualified technicians
- Track the usage of calibrated instruments and tools via Work Order Steps

Project Tracking

CHAMPS Project Tracking module allows you to define and manage all capital and expense projects, as well as view all estimated, actual, committed and remaining amounts. The Project Tracking module helps you to easily associate and display all project related documents including work orders, material requests, purchase requests, purchase orders, etc. Project Tracking features include:

- User defined project overrun graphical indicators
- Automatic project planner e-mail notification
- Instant Access to All Documents Associated to a Project
- Differentiation of Labor, Contract Labor, and Material Costs
- Labor and Material Account Definition at the Project Task Level
- Cost Accumulation at the Task and Project Level
- Project Cost Adjustment Functionality
- On-line Project Cost Recalculation
- Planner Notification for Project Cost Limits

Condition Reports

The Condition Reports module provides the ability to report, classify, trend, distribute and review issues for resolutions. Condition Reports are used to initiate the process of reviewing and correcting problems. This module is integrated with the CHAMPS workflow engine, which defines the work approval process associated with your Condition Report program. The following is a list of some of the features and functions that are included:

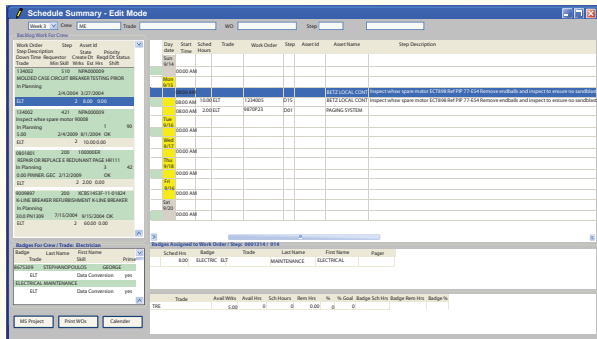
- Creation of work orders from a Condition Report document
- Auto notification setup for review and acceptance of Condition Reports
- Condition Reports to Work Order cross-reference is provided for traceability
- Ability to track Condition Reports that are not turned into work orders
- Condition Reports sequencing is provided for grouping of actions to a single action
- Entry (deletion or modification) can be tracked for auditing purposes on user-defined fields. The information tracked includes user's id, name and date/time of the change as well as before and after image of the change. This is in compliance with 21 CFR part 11
- Equipment and Equipment systems are tracked
- Each Condition Report has a non-conformance code and determines the category that can be selected
- All Condition Reports and related sub-documents have document attachment functionality
- Actions can automatically be populated by the system based on the equipment criticality and work order class codes

Equipment Tree

CHAMPS Equipment Tree View provides an easy to understand user interface for creating equipment hierarchies and changing equipment locations within the system. The Equipment Tree includes the following functionality:

- Equipment location changes performed on the Tree Browse will update the equipment and its new parent
- The equipment's Movement History will be updated and the parent's Location History will be updated
- Provide a Treeview window displaying parent/child relationships by hierarchy, Department, System, or Type groups
- Display all Equipment maintenance data from the Treeview

Multi-day Scheduling



The Multi-day Scheduling uses the Crew Calendar and Personnel Badge Calendar to determine working and non-working days. This feature rich component contains the following functionality

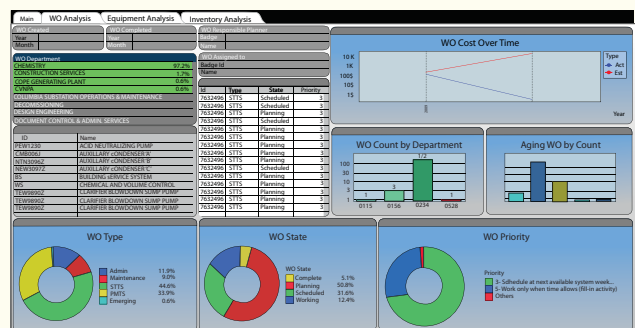
- Permits a Work Order Step to be scheduled on multiple dates
- Schedule creation for up to six weeks in the future
- Allows defining of Crew/Trade scheduling availability
- Provide a schedule report showing a Crew's schedule over a month while indicating non-working days
- Warn of Badge assignments exceeding the person's availability
- Work Order Steps may be dragged from a backlog list into a schedule week / date
- Work Order Steps and Badges may be added to the schedule using barcode input
- Scheduled Trade hours will be displayed in relation to available and remaining hours
- Assigned work may be displayed by Badge for up to six weeks in the future

Business Intelligence

In many organizations, information gaps exist between disparate systems or departments. Such information gaps impede quick and informed decision making, leading to inefficient operations. CHAMPS Business Intelligence solutions enable you to transform your disparate data into visual information on active dashboards. Using CHAMPS Dashboards, you can integrate all critical data across operations, maintenance, finance and other departments to get real time information to create your "what-if" scenarios.

Personalized for each employee in your organization, the Dashboard offers instant snapshots of key performance indicators (KPIs), such as Maintenance costs, planned Maintenance, Overtime, Rework, Inventory Turnovers and Safety. With the active Dashboard, you can analyze and act on crucial data, leading to efficient operations and maintenance. Some of the benefits of CHAMPS Business Intelligence solution include:

- Elimination of information gaps between departments or systems
- Gain instant visibility into your plant performance
- Identify progress or problems with your KPIs
- Resolve problems with greater speed
- Organize data the way you want to evaluate it
- Customize views to provide information the employees need to do their jobs
- Create and share user defined reports



CHAMPS delivers complete solutions, including all the services necessary for product evaluation, implementation and ongoing support. Our broad range of services includes:

Product Evaluation

We understand that prospects evaluate several solutions available in the market place to determine which solution will best meet their requirements. CHAMPS makes it extremely easy for you to evaluate our company, customers and the functionality of our applications. We conduct detailed presentations and demonstrations to verify the functionality of the applications. We provide a clear understanding of the functional capabilities and how the application flows.

Implementation Planning

Once the contracts have been signed and delivered, the real work begins. The first order of business is to discuss the overall implementation project objectives and the project timeframes. Representatives from each of your business units are included in these planning sessions (i.e. maintenance, engineering, materials management, purchasing, accounting, information technology). Implementation Planning establishes the project goals, schedules and identifies resources to be deployed by both CHAMPS and their customers.

The planning sessions include the following:

- CHAMPS system overview
- Project goals and objectives
- Work process and flows defined
- CHAMPS support process reviewed
- Add realistic dates to project plan
- Discuss data conversion
- Discuss integration requirements
- CHAMPS installation

Application Overview

It is important for the customer team to understand the details of the application. CHAMPS provides this through an application overview that exposes the team first to the administration requirements and how to apply them. The second part is a detailed overview of all of CHAMPS components and processes. This gives the team a detailed understanding of the application functionality and work flow. Based on this training, the customer team begins to configure the application and starts to assess the process flow and analyze opportunities to apply new best practices.



Application Modification & Integration

CHAMPS provides comprehensive services to modify and integrate applications to meet your requirements. This is accomplished by first conducting a gap analysis of what CHAMPS delivers within the application and your specific needs. The gap(s) are identified and enhancements or process changes are proposed. The integration requirements are also discussed and defined. Once the details are agreed upon, design specifications are developed for approval by the team. Modifications and/or integration work will begin once the specifications have been approved and the work is authorized.

Data Conversion

Most customers require their existing data to be converted from another source into CHAMPS' database. CHAMPS develops programs to automate this process. Thus, the actual process to move the data to a customer's test environment takes a short amount of time. The bulk of the time is devoted to complete testing of the data to assure that it has been converted accurately. This testing is important and includes the evaluation of data problems.

Training

Training requirements vary with each implementation. CHAMPS is flexible in how we train. We can train each and every user or we can do workshops where instruction is based on job function. Train the trainer is also a successful method. This helps CHAMPS transfer the knowledge so that you can be self-sufficient once in production.

CHAMPS provides training materials for each class and can tailor the classes to whatever topics need to be reviewed. We work with customers to define the curriculum and execute it thoroughly. Training includes administrative and functional application training. We also can provide training to the core team regarding set up of the application. Periodical training can also be established to keep your staff up to date with all the latest releases.

Application Validation Testing

CHAMPS works with you to determine the appropriate testing method for validating the application functionality, modifications, integration and data conversion. Test plans and acceptance procedures are developed and implemented to get the application signed off. Any variation from the original requirements are documented and corrected. The process continues until the customer validates the application and signs off.

Acceptance & Go Live Support

Once validated the system is in a position to go live. The application is put into production and the appropriate team members are onsite from both the customer and CHAMPS.

Ongoing Maintenance and Support

CHAMPS provides on going application maintenance and support through separate agreements with customers. Ongoing maintenance includes error correction and periodic new releases of the product. Ongoing support includes responding to customer questions and product enhancement specific to customer needs. CHAMPS also provides services for implementing major releases of the product.

Consulting

Maintenance

- Best Practices
- Equipment Database Design
- Workflow Design
- Standards
- Specification
- Preventive Maintenance Programs

Work Management

- Process Flow Design
- Output Document Design and Layout
- Workflow Design
- Job Standards
- Calibration Program Design

Procurement

- Process Flow Design
- Routing & Approval Configuration
- Output Document Design and Layout
- Vendor Analysis

Regulatory Compliance

- Integrated Safety Management Analysis and Design
- Lockout / Tagout Design and Implementation
- Custom Report Development
- Permitting Process Flow Design
- QA / QC Inventory Control

The Bottom Line...

Your revenue producing assets represent a huge investment. Optimizing their performance is critical to meeting your organizational goals and presents a complex challenge. An effective asset optimization program must consider issues pertaining to people, processes, parts, technology and information. CHAMPS provides the basis for meeting the challenge of optimizing your asset performance to achieve your goals. With CHAMPS, you will be able to judge success by measuring costs, availability, and performance against both internal and external benchmarks. CHAMPS helps you meet your asset optimization challenge by enabling you to achieve:

- Higher and consistent revenue generation through better asset availability
- Lower costs for maintenance labor, parts and service contracts
- Better regulatory compliance with reduced incidents and quicker response
- Informed decision making pertaining to asset maintenance and replacement
- Integrated systems and work processes to manage physical and human assets efficiently
- Reduced downtime by scheduling preventative and corrective maintenance
- Prolonged equipment life by analyzing and acting on information providing maintenance histories, performance, operations and testing throughout the entire lifecycle of each equipment



CHAMPS

CHAMPS Software Inc.
1255 N. Vantage Point Drive
Crystal River, FL 34429

Tel: (352) 795-2362 Fax: (352) 795-9100

www.champsinc.com